

BRUCE MATHER

INDEPENDENT ESTATE AGENT

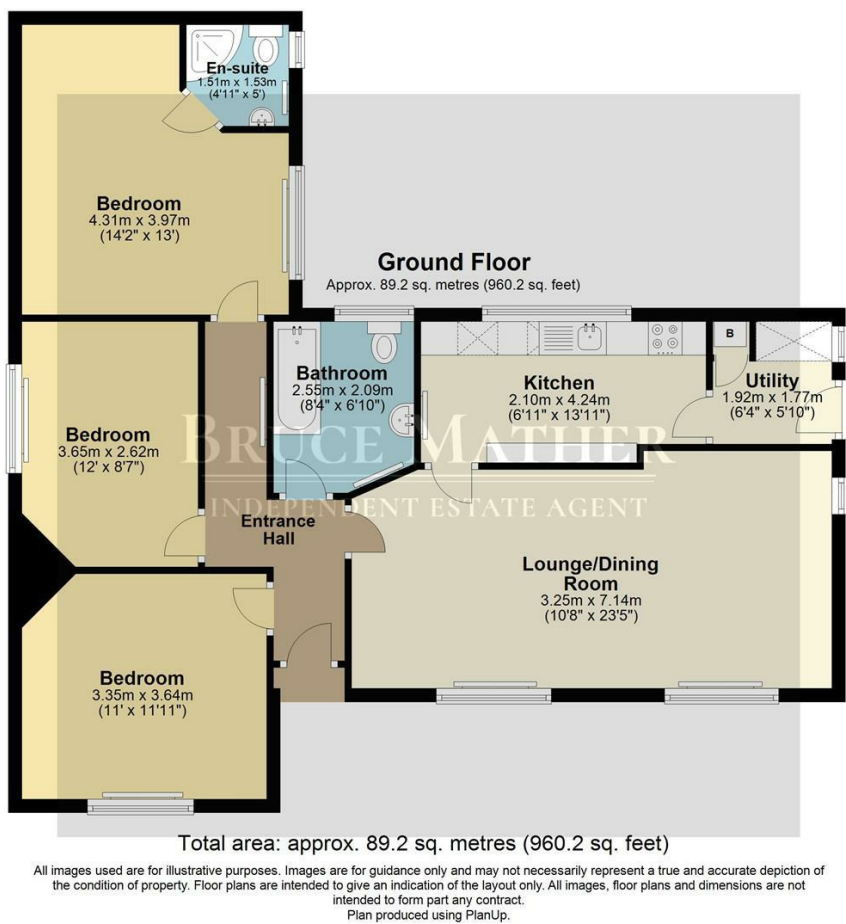


White House Lane, Boston, PE21 0BE

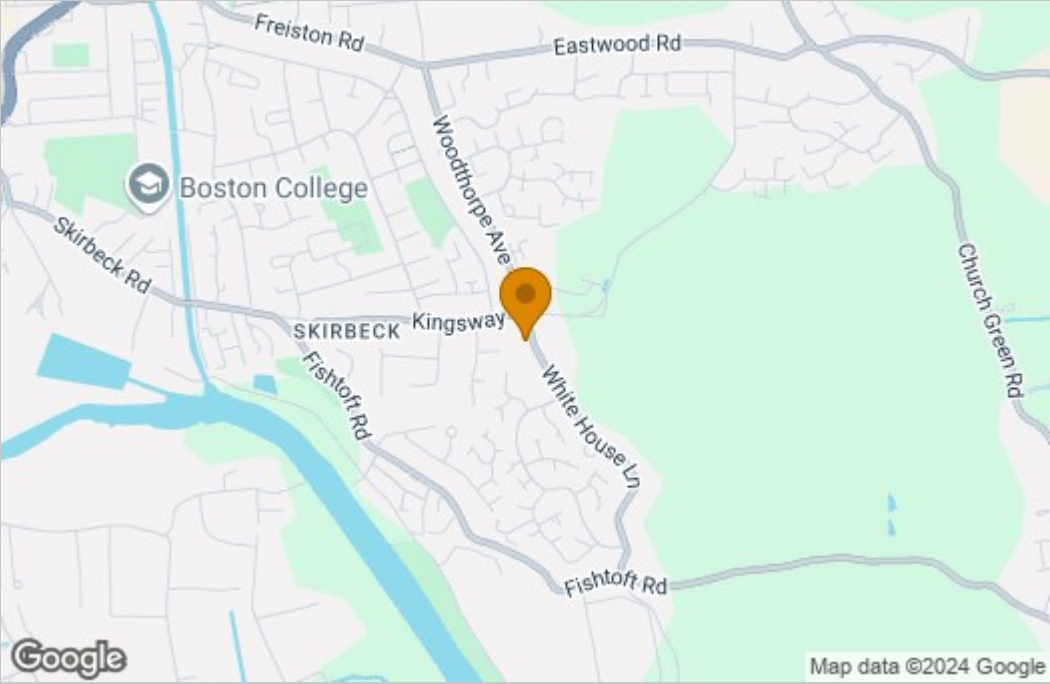
Asking Price £265,000

Nestled on White House Lane on the edge of Fishtoft, this delightful 3-bedroom bungalow, recently redecorated, offers a fresh and inviting atmosphere, perfect for those seeking a cosy retreat on the outskirts of town. The property itself sits on a great-sized plot, offering a generous wrap-around garden, and enough space to build yourself a double garage if needed. It already has a gravelled area which offers 2 parking spaces. Step inside to discover an open-plan living room/dining room, ideal for entertaining guests or simply relaxing with loved ones. Following through to a good-sized kitchen and separate utility space. The property boasts 3 good-sized double bedrooms with the master bedroom boasting an ensuite, offering a touch of luxury and convenience. Call Bruce Mather on 01205365032 to arrange a viewing.

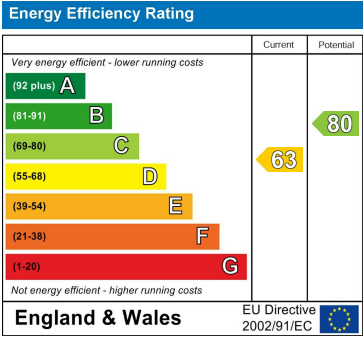
Floor Plan



Area Map



Energy Efficiency Graph



These particulars, whilst believed to be accurate are set out as a general outline only for guidance and do not constitute any part of an offer or contract. Intending purchasers should not rely on them as statements of representation of fact, but must satisfy themselves by inspection or otherwise as to their accuracy. No person in this firms employment has the authority to make or give any representation or warranty in respect of the property.